

## Newsletter from the Governing Body

Amazingly we are already past the half-way point in the school year, and the big news is our recent graded inspection of the school by Ofsted under Section 5 of the Education Act 2005 which resulted in us most deservedly retaining our 'Good' judgment - a word that does not really do things justice as we are a 'great' school. It was an outstanding team effort, but even an outstanding team needs to be led and Ofsted rightly commented on the 'inspirational leadership' that we enjoy at the school.

The Ofsted report mentioned how "Pupils are rightly proud to attend Long Sutton CofE Primary School...a welcoming and happy place...pupils are polite, well-mannered and considerate of others... all pupils are included and well cared for...the school is ambitious for all pupils to learn well across the curriculum [and] has designed an ambitious curriculum...staff take time to build warm and secure relationships with pupils [which] helps them to learn well in a calm and nurturing environment...pupils behave well." Now that we have Ofsted out of the way we can concentrate on further developing the wider curriculum.

Improvements to the school estate and infrastructure continue to be made. Twelve new iPads were procured by the PTFA and we are extremely grateful for their ongoing efforts, the Governors' Trust contributed a further 3. We are also busy implementing actions from recent fire and asbestos inspections. Wherever possible, we employ 'self-help' from the school staff and Governing Body.

Classes have taken part in visits to Haynes Motor Museum and Glastonbury (Rural Life Museum and Glastonbury Abbey), as usual the children attracted many positive comments from members of the public about their behaviour and attitude. At the start of half term over 20 members of the choir took part in *A Festival of Song* at Westlands Entertainment Venue in Yeovil together with choirs from other local schools and adult choirs too; the children performed brilliantly and were completely unphased by the setting and large audience.

The theme for worship this term has been 'Resilience', the children are clear about what this is and are beginning to see how it impacts their lives. They talked very positively during the Ofsted inspection about how they enjoy worship and value this time, they were able to articulate our vision and values and how these help them.

There have been recent changes to the Governing Body. Emily Bowditch has departed at the end of her 4-year term of office (the last 18 months as Chair) and we thank her for her sterling efforts. We have welcomed David Brayshay (Parent Governor) and Rick Pettipher (Foundation Governor) but still have 3 vacancies for Foundation Governors, appointed by the Diocese of Bath and Wells to ensure that the guiding principles of the founding church are incorporated into all aspects of school governance. The role of the Governing Body is to provide strategic leadership and accountability, and support the work of the Head Teacher and staff as a 'critical friend', through 3 key functions:

1. *Overseeing the financial performance of the school and ensuring that money is well spent*
2. *Holding the Head Teacher to account for the educational performance of the school and pupils*
3. *Ensuring clarity of vision, ethos and strategic direction*

One of our responsibilities is providing 10% towards any capital works project undertaken within the school, including general repairs to the estate. This is done through the Long Sutton Governors Trust (Registered Charity 1166781); effectively, every pound in the fund is worth ten to the school. The fund also pays for advertising and subscriptions to educational resources.



**Tim Brand**  
Foundation Governor



**David Brayshay**  
Parent Governor



**Clare Cole**  
Staff Governor



**Mike Hampson**  
Local Authority Governor  
*(Acting Chair of Governors)*



**David Harding**  
Foundation Governor



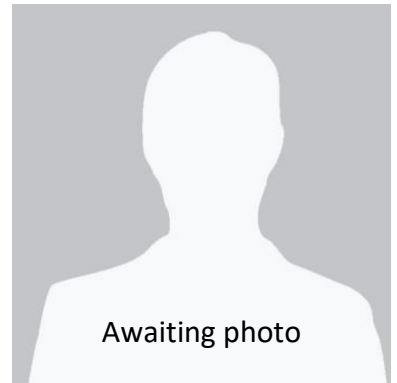
**Lesley Kellett**  
Parent Governor



**Lizzie Reynolds**  
Head Teacher



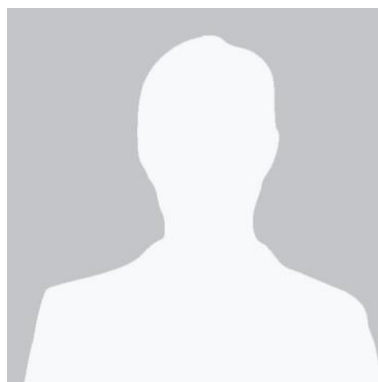
**Kate Stent**  
Foundation Governor



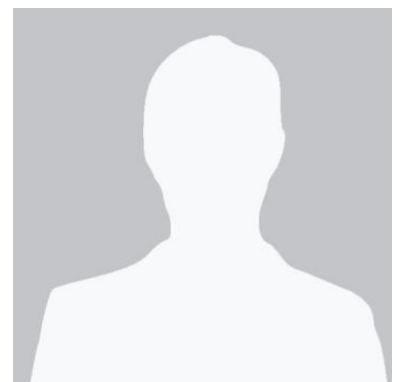
**Rick Pettipher**  
Foundation Governor



**Vacant**  
Foundation Governor



**Vacant**  
Foundation Governor



**Vacant**  
Foundation Governor